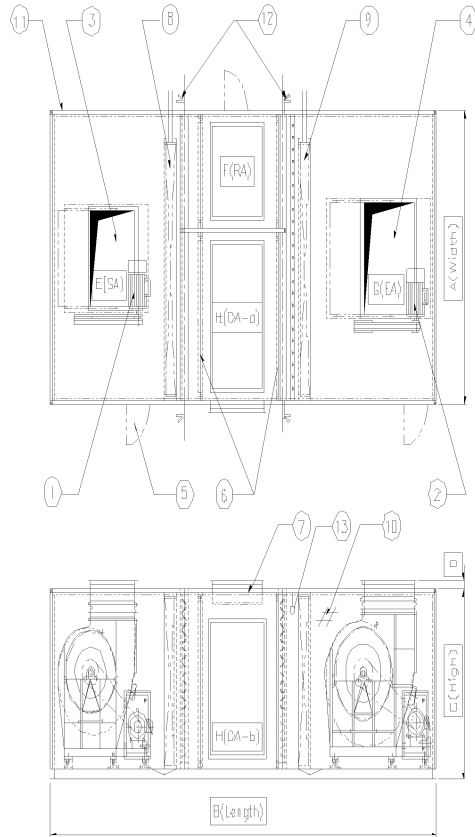


# 제 3 장 제원 및 사양

## 1) 냉·난방기(HAH) 제원



NO	DESCRIPTION
1	SUPPLY FAN MOTOR
2	EXHAUST FAN MOTOR
3	SUPPLY BLOWER
4	EXHAUST BLOWER
5	ACCESS DOOR
6	PRE FILTER
7	SUB HEATER
8	EVAPORATOR
9	CONDENSER
10	INSULATION
11	CASING
12	DAMPER
13	SPRAY NOZZLE

☞ I : 공조기 외부에 FAN MOTOR 설치시 BASE 크기 참조용

기종 (HAH)	A	B	C	D	E(S.A) (□H×V)	F(R.A) (□H×V)	G(E.A) (□H×V)	H(O.A) (□H×V)	I
50	1000	4000	1150	100	240 x 350	450 x 180	305 x 390	700 x 270	-
75	1200	4500	1300	100	305 x 400	450 x 270	380 x 490	590 x 390	-
100	1500	4750	1300	100	380 x 500	450 x 380	455 x 590	540 x 570	-
150	1700	5150	1500	100	455 x 600	500 x 460	535 x 690	630 x 690	-
200	2000	5200	1600	100	455 x 600	500 x 580	535 x 690	710 x 870	600
250	2000	6100	1800	100	535 x 700	650 x 520	610 x 790	830 x 780	600
300	2200	6150	1800	100	535 x 700	650 x 640	685 x 880	810 x 960	600
400	2400	6700	2200	100	610 x 800	750 x 680	760 x 980	1020 x 1020	600
500	2550	7350	2200	100	685 x 900	850 x 740	840 x 1080	1170 x 1110	650
600	2950	7500	2200	100	685 x 900	900 x 900	915 x 1180	1150 x 1350	700
700	3200	7750	2300	150	760 x 1000	950 x 960	915 x 1180	1260 x 1440	700
800	3450	8350	2400	150	840 x 1100	950 x 1060	1065 x 1400	1470 x 1590	700
900	3450	8500	2400	150	840 x 1100	1000 x 1060	1065 x 1400	1470 x 1590	700
1000	3750	8650	2400	150	915 x 1200	1200 x 1180	1065 x 1400	1470 x 1770	800
1200	4000	9400	2700	150	1065 x 1400	1200 x 1280	1220 x 1600	1620 x 1920	800
1500	4400	10000	3000	150	1065 x 1400	1400 x 1440	1370 x 1800	1800 x 2160	900
1800	4900	10800	3300	150	1220 x 1600	1600 x 1640	1525 x 2000	1900 x 2460	900
2000	5200	11350	3300	150	1370 x 1800	1800 x 1740	1675 x 2376	2000 x 2610	900